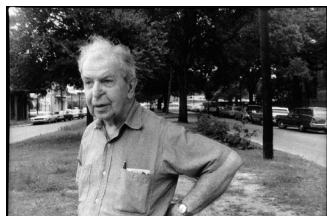


A TRIBUTE TO CLARENCE JOHN LAUGHLIN

THE FATHER OF AMERICAN SURREALIST PHOTOGRAPHY

VINTAGE PRINTS BY CLARENCE JOHN LAUGHLIN AND INSPIRED WORKS BY MODERN PHOTOGRAPHERS.



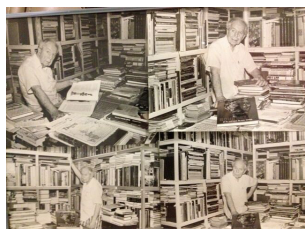
BARRY KAISER
CLARENCE ON DECATUR ST, 1976
ARCHIVAL PIGMENT PRINT.
17 3/4 x 11 5/8 IN.
SIGNED IN INK AU VERSO.
\$400 UNFRAMED



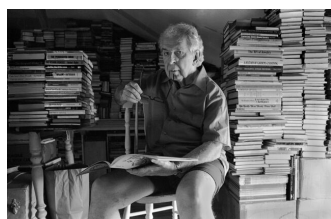
BARRY KAISER
UNTITLED, 1997
SELENIUM TONED GELATIN SILVER PRINT.
17 1/2 x 12 IN.
SIGNED IN INK AU VERSO.
\$900 UNFRAMED



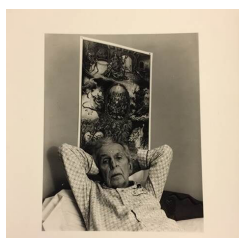
DAVID RICHMOND
HE DREAMS FOR ALL OF US
GELATIN SILVER PRINT.
17 1/2 x 12 1/2 IN.
NFS
DIGITAL REPRODUCTIONS AVAILABLE \$300



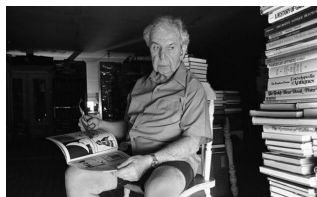
NANCY MOSS
FOUR PORTRAITS OF CLARENCE
GELATIN SILVER PRINTS.
14 3/4 x 18 3/4 IN.
NFS



OWEN MURPHY
CLARENCE AT PONTALBA APARTMENT #2
ARCHIVAL PIGMENT PRINT.
9 1/8 x 14 IN.
SIGNED & DATED AU RECTO.
\$400 FRAMED



JOHN H. LAWRENCE
PORTRAIT OF CLARENCE JOHN LAUGHLIN
GELATIN SILVER PRINT.
5 3/4 x 7 1/2 IN.
NFS



OWEN MURPHY

CLARENCE AT PONTALBA APARTMENT #1

ARCHIVAL PIGMENT PRINT.

8 3/4 x 14 IN.

SIGNED & DATED AU RECTO.

\$400 FRAMED



CLARENCE JOHN LAUGHLIN (1905-1985)

TREE OF FEAR, 1941

GELATIN SILVER PRINT 1961

10 X 7 1/4 IN.

SIGNED ON ARTIST'S MOUNT AND CAPTION AU VERSO. STAMPED AND ANNOTATED "MADE BY CJL 4/21/61" & "VINTAGE PRINT" AU RECTO.

\$5000 FRAMED.



CLARENCE JOHN LAUGHLIN (1905-1985)

CROSS WITH CURLICUES

ORIGINAL VINTAGE PHOTOGRAVURE, PRINTED 1938.

10 X 7 1/4 IN.

UNSIGNED

\$1000 FRAMED



CLARENCE JOHN LAUGHLIN (1905-1985)

THE ENIGMA, 1941

GELATIN SILVER PRINT, PRINTED 1973.

13 1/4 X 10 1/2 IN.

SIGNED, TITLED, DATED IN IN AU VERSO ON ARTISTS BOARD. CAPTION AND ©1973 STAMP WITH PRINT NO. 71 WRITTEN IN INK AU RECTO

\$10,000 FRAMED



CLARENCE JOHN LAUGHLIN (1905-1985)

WHITE AGAINST GRAY #1, PARLANGE PLANTATION, 1947

GELATIN SILVER PRINT, PRINTED LATER.

7 3/4 X 9 3/4 IN.

SIGNED, TITLED, DATED IN INK AU VERSO & TITLED AND NUMBERED 2/95 AU RECTO

\$5000 FRAMED



RICHARD SEXTON

ELGIAC MOMENT, 2006

QUADTONE PIGMENT PRINT, PRINTED LATER.

15 x 15 IN.

SIGNED, TITLED, DATED, EMBOSSED & NUMBERED 6/25 IN PENCIL AU VERSO.

\$500 UNFRAMED

\$650 FRAMED



RICHARD SEXTON

SCHWARZENBERG COAT OF ARMS; OSSUARY, SEDLEC, CZECH REPUBLIC, 2007

QUADTONE PIGMENT PRINT, PRINTED LATER.

15 x 15 IN.

SIGNED, TITLED, DATED, EMBOSSED & NUMBERED 3/25 IN PENCIL AU VERSO.

\$500 UNFRAMED

\$650 FRAMED



RICHARD SEXTON

CRYPT FOR THE OLD FARMSTEAD

QUADTONE PIGMENT PRINT, PRINTED LATER.

14 3/4 x 12 IN.

SIGNED, TITLED, DATED, EMBOSSED & NUMBERED 5/25 IN PENCIL AU VERSO.

\$500 UNFRAMED

\$650 FRAMED



RICHARD SEXTON

ENCROACHMENT

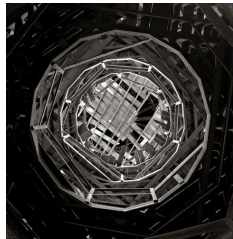
QUADTONE PIGMENT PRINT, PRINTED LATER.

15 x 15 IN.

SIGNED, TITLED, DATED, EMBOSSED & NUMBERED 4/25 IN PENCIL AU VERSO.

\$500 UNFRAMED

\$650 FRAMED



RICHARD SEXTON

INNER ROTUNDA, LONGWOOD PLANTATION

QUADTONE PIGMENT PRINT, PRINTED LATER.

15 1/4 x 15 IN.

SIGNED, TITLED, DATED, EMBOSSED & NUMBERED 2/25 IN PENCIL AU VERSO.

\$500 UNFRAMED

\$650 FRAMED



EUPHUS RUTH

WATER VALLEY HOUSE, 2013

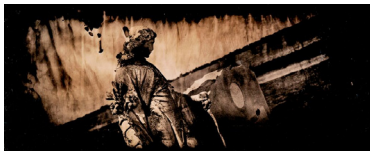
UNIQUE AMBROTYPE.

11 x 14 IN.

SIGNED, TITLE & DATED IN INK AU RECTO.

\$1300 UNFRAMED

\$1500 FRAMED



EUPHUS RUTH

ANGEL ON THE ROAD TO LAWRENCE DEADENING

UNIQUE TINTYPE.

7 x 17 IN.

SIGNED, TITLED & DATED IN INK AU RECTO.

\$1500 UNFRAMED

\$1700 FRAMED



EUPHUS RUTH

UNITED HARDWARE, NEW ORLEANS, 2013

UNIQUE AMBROTYPE.

11 x 14 IN.

SIGNED, TITLED & DATED IN INK AU RECTO.

\$1300 UNFRAMED

\$1500 FRAMED



ANNA TOMCZAK

BLUE CHIMES, 2014

POLAROID DYE TRANSFERRED TO WATER COLOR PAPER.

26 1/2 x 20 1/2 IN.

SIGNED IN PENCIL AU VERSO.

\$3200 UNFRAMED



ANNA TOMCZAK
RUBY CALLAS III, 2006
 POLAROID DYE TRANSFERRED TO WATER COLOR PAPER.
 26 1/2 x 20 1/2 IN.
 SIGNED IN PENCIL AU VERSO.
 \$3200 UNFRAMED



ANNA TOMCZAK
ELIZABETH'S SCARF, 2005
 POLAROID DYE TRANSFERRED TO WATER COLOR PAPER.
 26 1/2 x 20 1/2 IN.
 SIGNED IN PENCIL AU VERSO.
 \$3200 UNFRAMED



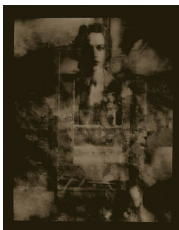
BARRY KAISER
UNTITLED, 1997
 SELENIUM TONED GELATIN SILVER PRINT.
 PRINTED 2015.
 17 1/2 x 12 IN.
 SIGNED IN INK AU VERSO.
 \$900 UNFRAMED



JOSEPHINE SACABO
DAMAGED MADONNA, 2015
 PHOTOPOLYMER GRAVURE.
 PRINTED 2015.
 17 3/4 x 13 5/8 IN. PERMANENTLY MOUNTED TO BOARD.
 EMBOSSED WITH ARTIST'S INITIALS AU VERSO. NUMBER 1 FROM EDITION OF 5.
 \$1800 FRAMED



JOSEPHINE SACABO
THE MEMORY PALACE, 2015
 PHOTOPOLYMER GRAVURE.
 PRINTED 2015.
 17 x 13 IN. PERMANENTLY MOUNTED TO BOARD.
 EMBOSSED WITH ARTIST'S INITIALS AU VERSO. NUMBER 1 FROM EDITION OF 5.
 \$1800 FRAMED



JOSEPHINE SACABO
JAUNA, 2015
 PHOTOPOLYMER GRAVURE.
 PRINTED 2015.
 16 x 13 IN. PERMANENTLY MOUNTED TO BOARD.
 EMBOSSED WITH ARTIST'S INITIALS AU VERSO. NUMBER 1 FROM EDITION OF 5.
 \$1800 FRAMED



JOSEPHINE SACABO
DEATH, 2015
 PHOTOPOLYMER GRAVURE.
 PRINTED 2015.
 17 x 12 3/4 IN. PERMANENTLY MOUNTED TO BOARD.
 EMBOSSED WITH ARTIST'S INITIALS AU VERSO. NUMBER 2 FROM EDITION OF 5.
 \$1800 FRAMED



SANDRA RUSSELL CLARK

ELYSIUM, GREENWOOD CEMETERY, TOMBS WITH CLOUDS, 1997

ARCHIVAL PIGMENT PRINT.

PRINTED 2008.

14 3/4 x 22 IN.

SIGNED IN PENCIL AU VERSO. TITLED, MARKED "AP", AND ARTISTS © AU RECTO.

\$1500 UNFRAMED

\$1800 FRAMED

SANDRA RUSSELL CLARK

ELYSIUM, LAFAYETTE CEMETERY, TOMBS WITH OAKS, 1997

ARCHIVAL PIGMENT PRINT.

PRINTED 2008.

21 1/2 x 14 1/4 IN.

SIGNED IN PENCIL AU VERSO. TITLED, MARKED "AP", AND ARTISTS © AU RECTO.

\$1500 UNFRAMED

1800 FRAMED



BRUCE SCHULTZ

NUDE WITH HEAD DRESS, 2015

ALBUMEN PRINT.

PRINTED 2015.

9 x 7 1/2 IN.

SIGNED IN PENCIL AU VERSO.

\$300 FRAMED



BRUCE SCHULTZ

OLD STATE CAPITOL DOME, 1975

GELATIN SILVER PRINT.

PRINTED 1975.

7 1/2 x 9 1/2 IN.

SIGNED IN PENCIL AU VERSO.

\$300 FRAMED



BRUCE SCHULTZ

WINDSOR RUINS, 2008

ONE OF A KIND TINTYPE.

PRINTED 2008.

7 1/2 x 9 IN.

SIGNED IN INK AU RECTO.

\$500 FRAMED



BRUCE SCHULTZ

ROSEDOWN PLANTATION GHOST, 2007

ALBUMEN PRINT.

PRINTED 2015.

13 3/4 x 11 IN.

SIGNED IN INK AU VERSO.

\$300 FRAMED



BRUCE SCHULTZ

AVERY ISLAND OAK, 2013

ONE OF A KIND TINTYPE.

PRINTED 2013.

11 x 13 3/4 IN.

SIGNED IN INK AU RECTO.

\$500 FRAMED



BRUCE SCHULTZ
CELLAR DOOR, 1977
 GELATIN SILVER PRINT.
 PRINTED 1977.
 9 1/2 x 7 1/2 IN.
 SIGNED IN PENCIL AU VERSO.
 \$300 FRAMED



BRUCE SCHULTZ
SCREEN DOOR, 2005
 GELATIN SILVER PRINT.
 PRINTED 2005.
 9 1/2 x 7 1/2 IN.
 SIGNED IN PENCIL AU VERSO.
 \$300 FRAMED



MEG TURNER & COURTNEY WEBSTER
THE UNSEEN BOXER (DIPTYCH), 2015
 PHOTOPOLYMER GRAVURE FROM TINTYPE
 PRINTED 2015.
 20 x 16 IN.
 SIGNED IN PENCIL AU VERSO
 \$700 UNFRAMED, \$1050 FRAMED
 (PRINTS PRICES INDIVIDUALLY)



MEG TURNER & COURTNEY WEBSTER
THE UNSEEN BOXER (DIPTYCH), 2015
 PHOTOPOLYMER GRAVURE FROM TINTYPE
 PRINTED 2015.
 20 x 16 IN.
 SIGNED IN PENCIL AU VERSO
 \$700 UNFRAMED, \$1050 FRAMED
 (PRINTS PRICES INDIVIDUALLY)

SCOTT EDWARDS GALLERY

2109 DECATUR ST. AT FRENCHMEN, NEW ORLEANS

SCOTTEDEWARDSGALLERY.COM (504)610-0581